



**Norwood Road, Herne Hill, SE24**

2 bedroom flat - conversion for sale

**£487,500**

Share of Freehold

## Property Details

Set on the top floor of a handsome period conversion, this two bedroom apartment overlooks the open green spaces of Brockwell Park and is filled with natural light from both front and rear. The generous reception is an inviting space, with two large windows framing uninterrupted park views. A striking blue feature wall adds character, with clearly defined areas to dine and to lounge. The semi-open plan kitchen can be closed off with sliding pocket doors and features navy blue cabinetry with gold hardware, sleek white worktops, a white subway tile splashback and integrated appliances. A window over the sink offers leafy garden views and excellent ventilation. The principal bedroom is peacefully positioned at the rear, decorated in green and white tones with soft carpet underfoot and space for wardrobes. The second bedroom enjoys further park views and is ideal as a guest room, nursery or home office. A modern bathroom completes the home, finished with grey tiling, subway tiles and a frosted window.

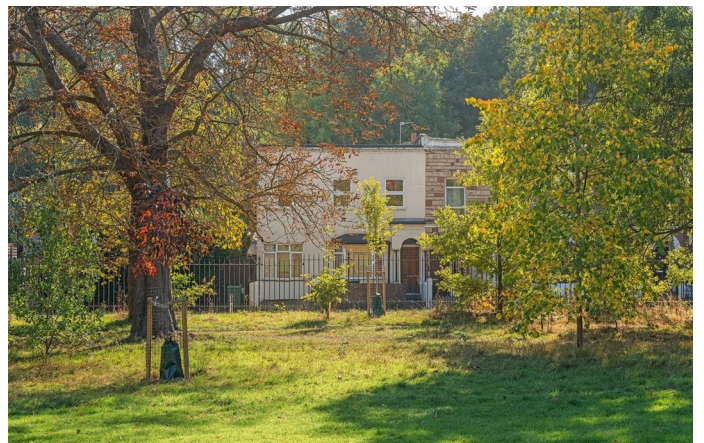
Council tax band C

EPC rating D (55)

## Features

- Two bedrooms
- Period conversion
- Overlooking Brockwell Park
- Bright and airy atmosphere
- Modern kitchen and bathroom
- Central Herne Hill a four minute stroll
- Brixton a fifteen-minute walk through the Park
- Short stroll to Herne Hill and Tulse Hill stations
- Share of freehold
- Chain-free



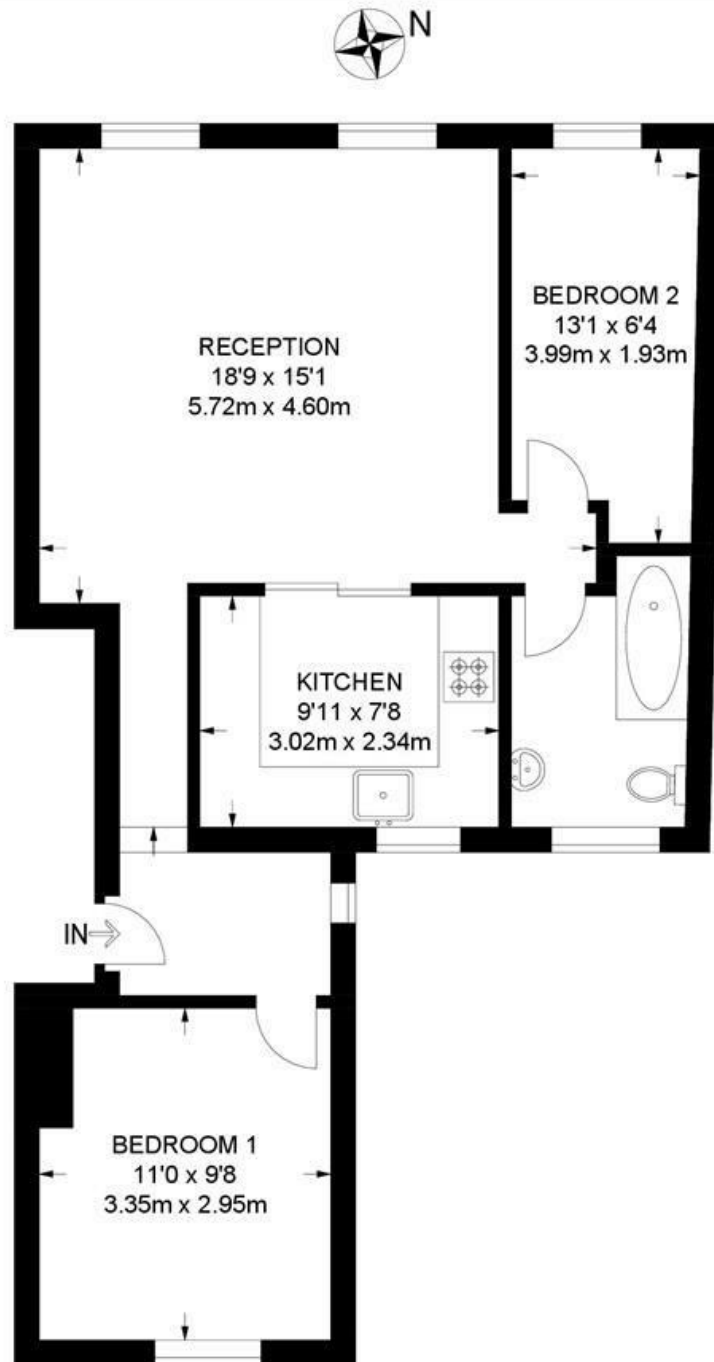


Norwood Road, Herne Hill, SE24

## Norwood Road, SE24

### 2 Bedroom Flat

APPROXIMATE GROSS INTERNAL AREA: 618 SQ FT / 57.4 SQ M



FIRST FLOOR



While we try our very best, floor plans are produced as a guide only and we take no responsibility for the precise accuracy with which any property is represented.



Norwood Road, Herne Hill, SE24

